

Quick Guide for Connection to Datacenter.

General Objective: Explain in a fast and accurate way the basic steps to get connected with the Logisuite Datacenter.

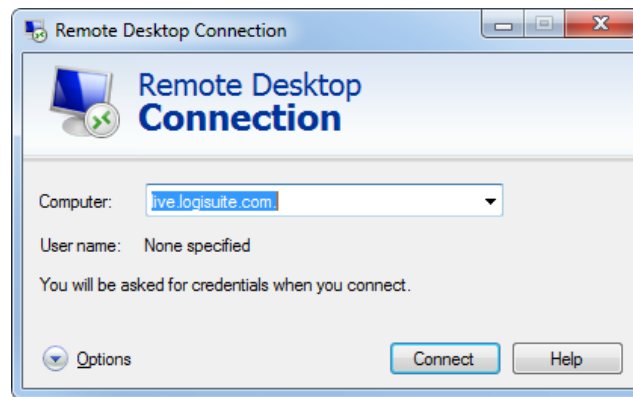
1- Getting Connected.

Logisuite uses **Remote Desktop Connection** (Terminal Services) to provide a connection with its datacenter. Remote Desktop Connection comes pre-installed on Windows XP, Windows Vista and Windows 7.

A. Locate and Launch the **Remote Desktop Connection** application:

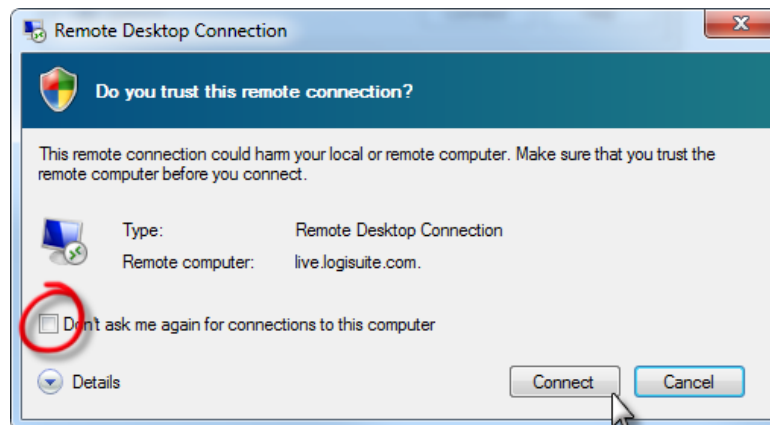
For its first launch our technical support representatives will provide you with a Logisuite.rdp attached to an email which you could save on your desktop getting you ready to connect with our datacenter. After it is installed on your pc, you may double click the Icon on your desktop prompting a small connection window on the screen where it will be required to specify the datacenter URL: live.logisuite.com

Figure#1



When you get connected for first time the following window will show up on your screen, to avoid future prompting you may check the box as shown on the figure.

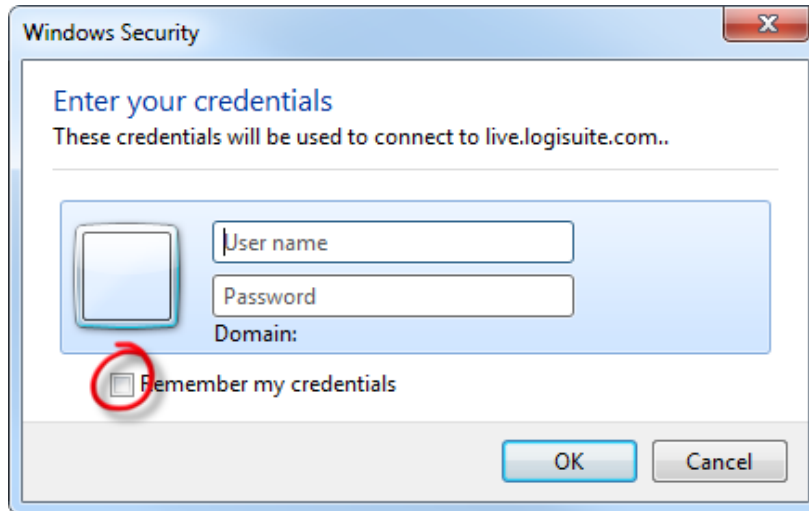
Figure#2



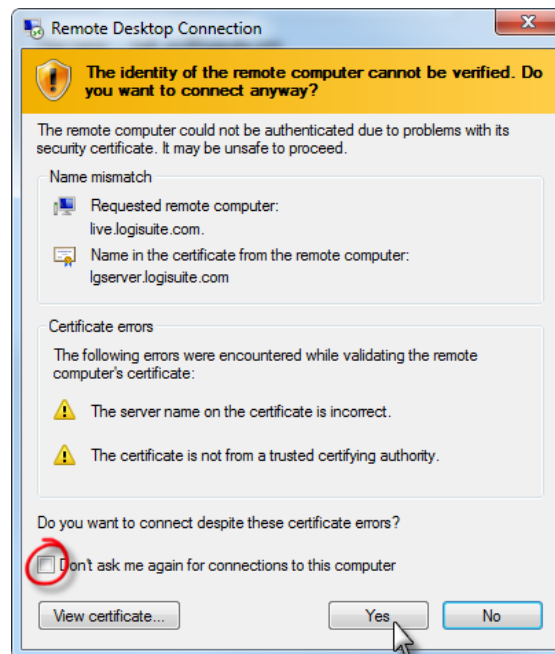


Once you get connected with the Logisuite Datacenter, you will need to provide your **username** and **password** credentials. After you click OK a second window will appear where you must select the box and click **Yes** as is shown bellow.

Figure#3



Figure#4

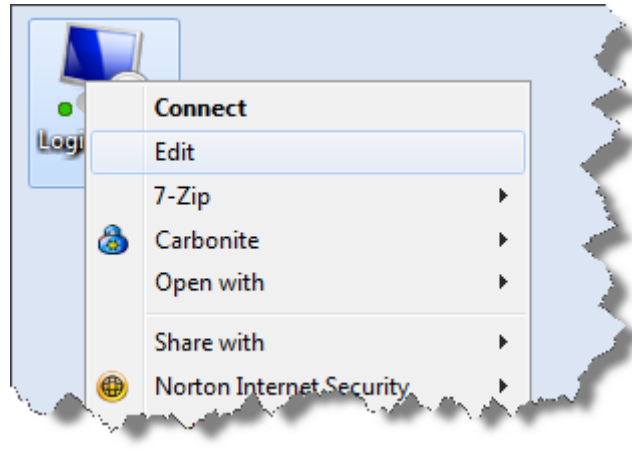




2-Editing RDP File

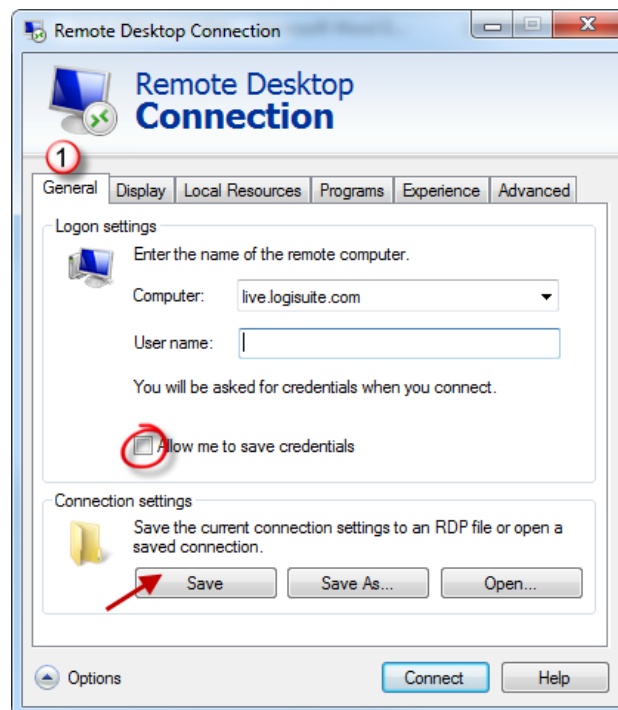
During the first time logisuite.rdp is launched from your local computer its default settings may not be suitable. You will be able to modify its configuration by making a right click on your desktop Icon and then selecting edit. This will bring up the Connection window showing the different setting options. After making any changes to the default setting come back to the **General Tab** and select **Save**. See Figures: 5 and 6.

Figure#5



Figure#6

1- General

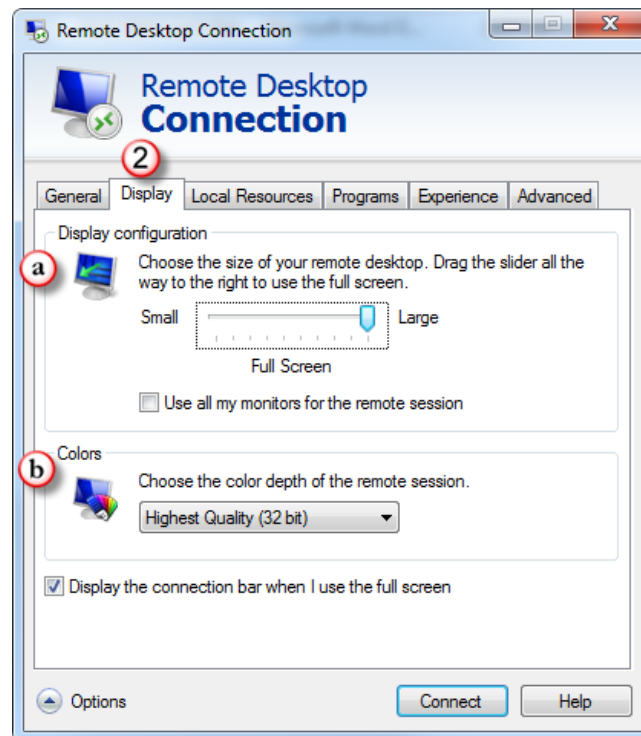




2-Display.

To get the best user experience with the **Remote Desktop** you could slide the size to **Full Screen** and also you could, re define the color depth.

[Figure#7](#)

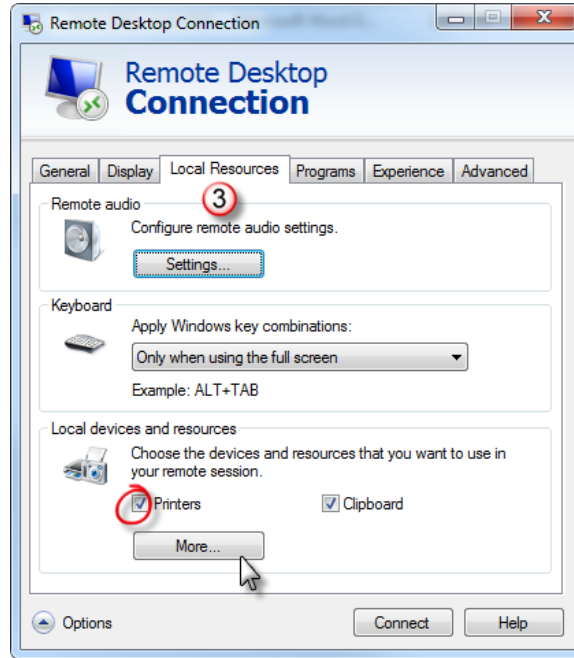


3-Local Resources

Drive mapping can be turned **on** or **off** by going to the *Local Resources Tab* and selecting the check box for printers or any other **Drive** that you may want to add. The next step will be to click on *More* and then check the **Drives** box to enable drive mapping. See Figures: 8 and 9 bellow.



Figure#8



Figure#9

